



Salupo 650

Welcome to an exciting future!

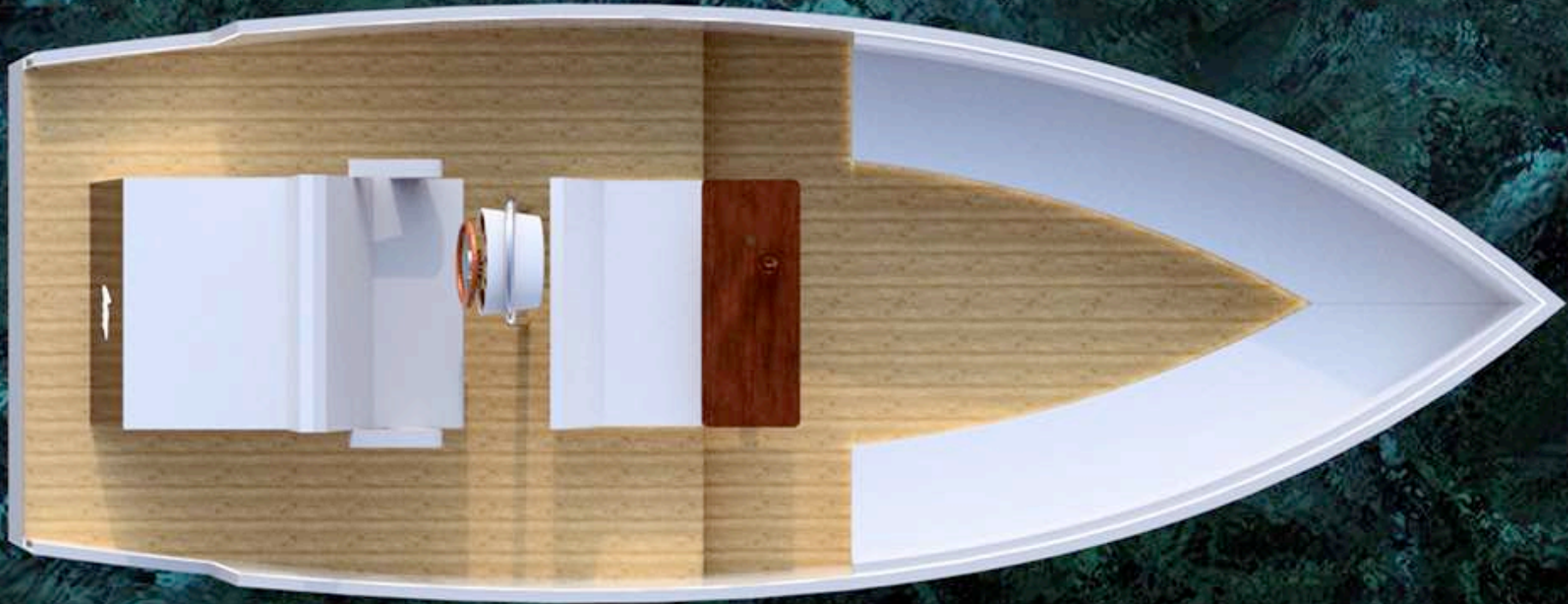
Liiso®



A child of a modern era.

The futuristic Liso salupo is the beginning of a new cycle of concept boats and explores the styling and technology of future models. With its welcoming style and its services geared towards boating pleasure, the salupo embodies our vision of future mobility and our nautical passion.

Our vision

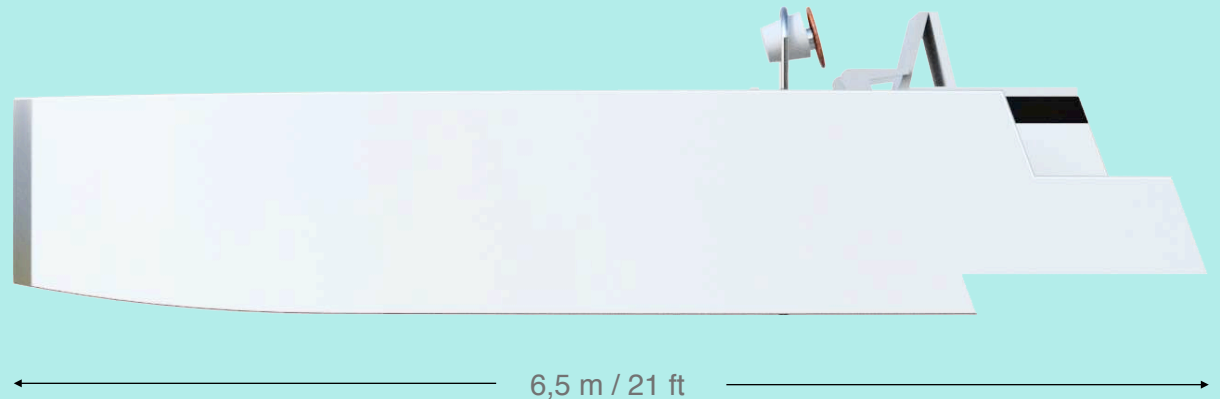
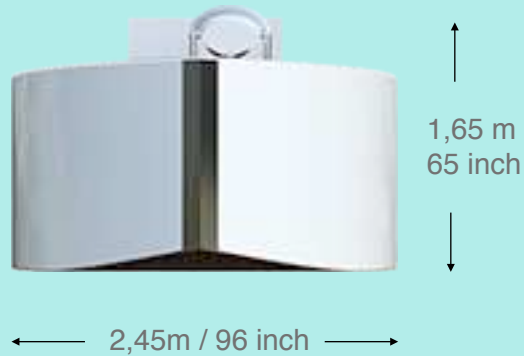


In the purest form, is to create a nautical equivalent of pret-a-porter. The future of luxury boating.
The interior space is designed to be your retreat from your life - evoking a feeling of privacy and ultimate relaxation.
This is not the end of the our journey. SALUPO represents the first of an endless range.
In the end, the future belongs to you: your imagination, creativity and desire.

Are you ready?

Standard, free options

WEC composite hull	+
White hull	+
Deluxe Stitching blind	+
Emblem: contrast	+
Wraparound LED	+
Chromed Italian style deck hardware	+
Chromed Italian style deck hardware	+
Hydraulic steering.	+
Mahogany steering wheel	+
Full quality marine leather.	+
120 hull colors	O
Stitching:Single	+
Stitching:Luxury	O
Stitching:Piping	O
Liso emblem: blind	+
LED: white or blue	+
Graphite epoxy fouling	O
Anti fouling	+
LED maintenance free navigation lights.	+
min 5 Year guaranty	+



A boat unlike any other.

Fuel Capacity:	120 L
Length overall:	6,5 m (21 ft)
Beam:	2,45 m (96 inch)
Draft:	0,1 m
People:	10
Displacement:	220Kg
CE-Category:	C Coastal waters

Configure

Non-contrast



Contrast



Luxury Non-contrast



Luxury Contrast



Non-contrast piping



Contrast piping



Embroidered Liso Emblem - Blind Stitch



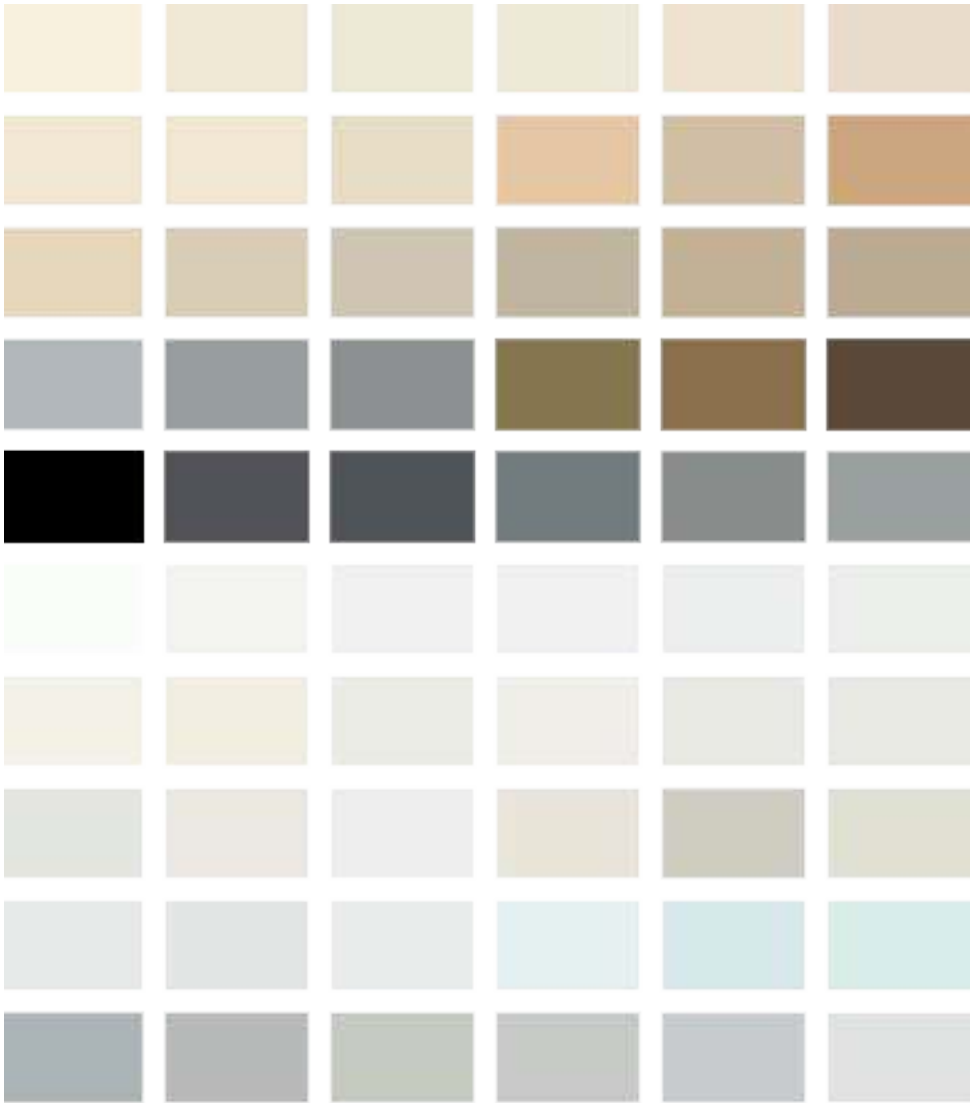
Liso Embroidered Emblem - Contrast



Hull paint palet 1



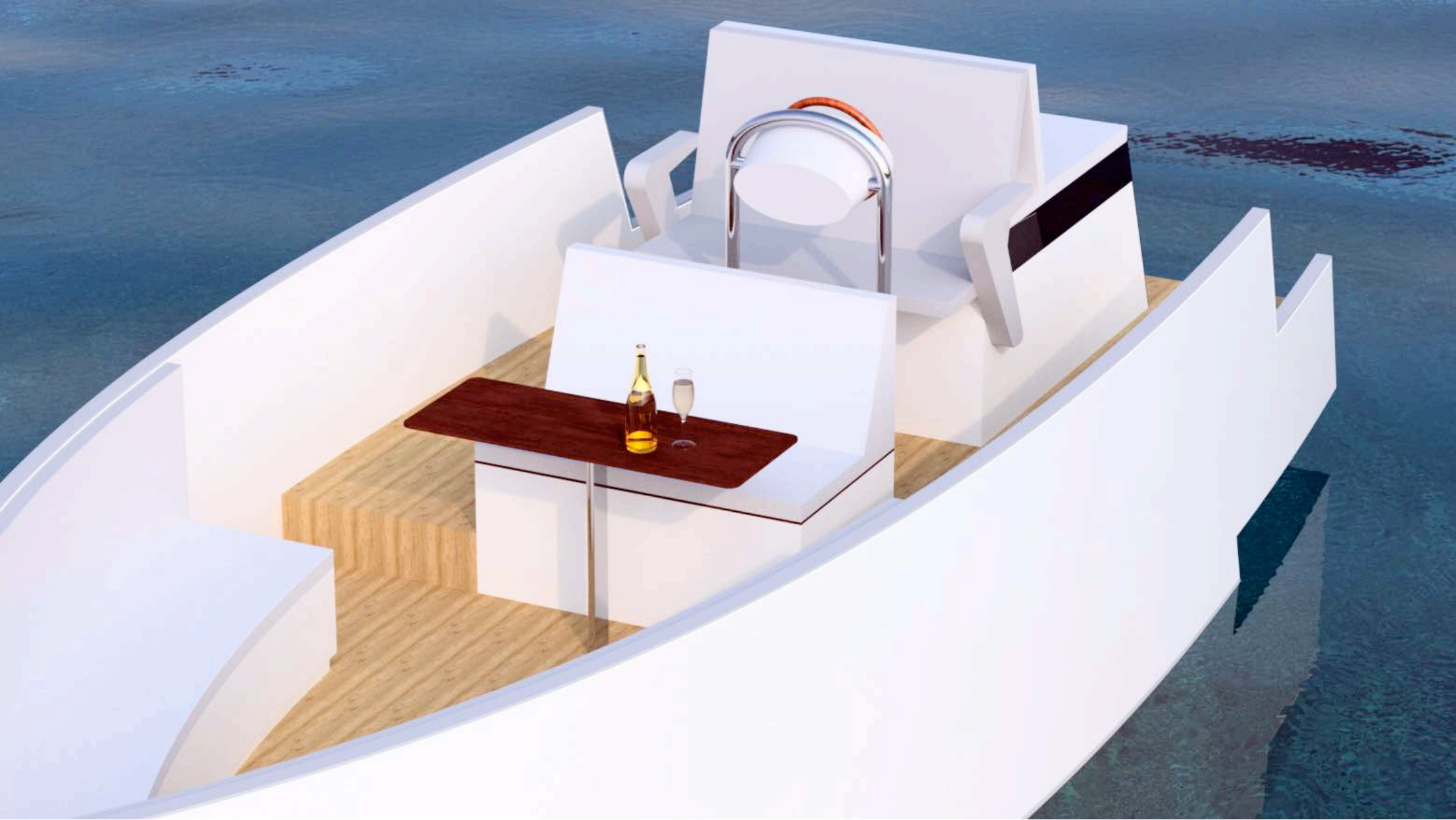
Hull paint palet 2





Options

48 metallic hull paints	<input type="radio"/>
Quality marine carpet	<input type="radio"/>
Bow sundeck	<input type="radio"/>
Fenders	<input type="radio"/>
Doors in the stern	<input type="radio"/>
Normal trailer RIBA	<input type="radio"/>
Mooring cover	<input type="radio"/>
Mooring lines	<input type="radio"/>
Deck Shower, watertank	<input type="radio"/>
120L Fuel, VDO gauge, filter	<input type="radio"/>
AC shorepower/battery charger	<input type="radio"/>
Fenders	<input type="radio"/>
Safety kit	<input type="radio"/>
Ancher	<input type="radio"/>
Audio system	<input type="radio"/>
Honda outboard	<input type="radio"/>



Manufacturer's test results. Actual speed results may vary depending on specifications of the vehicle, water and environmental conditions, testing procedures and driving styles. These results should be used for comparison only and verification should not be attempted on public waters.